

*Northern Exposure*

Inaugural survey of eight contemporary Canadian galleries  
on the occasion of L.A. Art Week

*Exhibition runs from February 24 through March 21, 2024*



Credit: Nicolas Baier, *Player One*, 2020, LED Light Box, 42 x 69 in. Courtesy of Blouin Division

**Opening reception Tuesday, February 27, 2024 from 6-9pm**

**Location: 6150 Wilshire Blvd, Los Angeles**

The Canadian Creative Accelerator (CCA), launched by the Consulate General of Canada in Los Angeles in September 2020, to promote Canada’s creative industries in Southern California, has seen success these past four years as a platform for the country’s TV, Film & Music companies to show, sell, and distribute their work while helping to expand their business in the United States. This year, the CCA will launch its focus on contemporary art. As part of L.A. Art Week, the CCA will open *Northern Exposure*, its inaugural Visual Arts program focused on contemporary Canadian artists and galleries. The Los Angeles exhibition is organized by LA-based curators Margot Ross and Michael Slenske. For this multimedia survey eight galleries were selected by a jury of top art professionals in Canada and the United States, including Gaëtane Verna (Executive Director of Wexner Center for the Arts and Curator of the Canadian Pavilion at the 2024 Venice Biennale), Mary-Dailey Desmarais (Chief Curator, Montreal Museum of Fine Arts), Ebony L. Haynes (David Zwirner), Jessica Warren (White Cube), Jean-François Bélisle (CEO & Director of the National Gallery of Canada), as well as local art world professionals including Anthony Cran (Wilding Cran Gallery), Davida Nemeroff (Night Gallery), and Elisabeth Forney (Los Angeles Contemporary Exhibitions). “After many years of success with the CCA programming in television, film, and music, we felt it was a natural next

step to extend the program to visual arts,” says Zaib Shaikh, Consul General of Canada in Los Angeles. “Los Angeles is considered, by many around the world, as the epicenter of the global art market and we could not imagine a better time to have this version of the CCA in LA.”

Jean-François Bélisle, CEO & Director of the National Gallery of Canada, will be joining Consul General Shaikh in welcoming the Canadian galleries in Los Angeles. “Canadian contemporary art galleries, together with Canadian artists, are doing incredible work and gaining recognition in the global art scene. I am pleased that I can help bring more attention to these luminaries by way of our collaboration with the Consulate General of Canada in LA. Being able to highlight these works during the LA Art Week, the most jam-packed stretch of the year in the city's arts calendar, is genuinely valuable.”

Works in *Northern Exposure* will include light box landscapes from Toronto-based photographer Scott McFarland (**Blouin Division**); two-sided artworks, created by California-born, Halifax-based artist Preston Pavlis (**Bradley Ertaskiran**), comprising tender figurative paintings on one side and intricate hand-crafted quilts on the other; hand-embroidered felt tapestries depicting native landscapes and the animals that inhabit them, by the late Inuit artist Elizabeth Angrnaqqaq Qiayuq (**Feheley Fine Arts**); digitally manipulated found images engaging with the representation of the Black female body in erotic and popular culture magazines from Karice Mitchell (**Franz Kaka**); lyrical abstractions mapping the terrain of natural environments and imaginary spaces by Montreal-based painter Melanie Authier (**Olga Korper Gallery**); sculptural works on paper from the Toronto-based Japanese-Canadian artist Alexa Kumiko Hatanaka (**Patel Brown**); paintings with denim, rhinestones, and rivets by Montreal-based Grace Kalyta (**Pangée**) explore adornment and spectacle; and a poetic photographic travelog of a multi-year sojourn in Slovakia, Europe, Canada, and parts of Latin America by Toronto-born artist Deanna Pizzitelli (**Stephen Bulger Gallery**).

An opening reception will take place Tuesday, February 27, 2024 from 6-9pm at 6150 Wilshire Blvd Los Angeles CA 90048.

#### **PARTICIPATING GALLERIES/ARTISTS**

**Blouin Division**/ Nicolas Baier, Marie-Claire Blais, Simon Hughes, Scott McFarland

**Bradley Ertaskiran**/ Preston Pavlis, Joseph Tisiga

**Feheley Fine Arts**/ George Arluk, Elizabeth Angrnaqqaq Qiayuq, Shuvina Ashoona, Killiktee Killiktee, Idris Moss-Davies

**Franz Kaka**/ Jennifer Carvalho, Karice Mitchell

**Olga Korper Gallery**/Melanie Authier, Sandra Brewster, Katherine Takpannie

**Pangée**/Grace Kalyta, Darby Milbrath

**Patel Brown**/Alexa Kumiko Hatanaka, Celia Perrin Sidarous

**Stephen Bulger Gallery**/ Nina Levitt, Sanaz Mazinani, Deanna Pizzitelli



Scott McFarland

### **Blouin Division - Montreal | Toronto**

Created in 2020 out of the merger of Galerie Division (founded in 2010) and Galerie René Blouin (founded in 1986), Blouin Division is one of the most dynamic commercial galleries in Canada. With the mission of promoting the careers of contemporary Canadian artists and disseminating their work to an international audience. The gallery works with 46 artists (including Wanda Koop, Corri Lynn-Tetz, and Chloe Wise) in Montreal and Toronto, as well as in New York City through its association with Arsenal Contemporary Art, in addition to participating in multiple international fairs every year.

### **Bradley Ertaskiran - Montreal**

Founded by Megan Bradley, former director of Parisian Laundry and Antoine Ertaskiran, former owner and director of Galerie Antoine Ertaskiran, Bradley Ertaskiran began operations in January 2020. The gallery occupies two spaces within a restored industrial building in Montreal. The atypical subterranean bunker space allows artists to engage with its concrete architecture, while the main floor offers 5,000 square feet of white-walled space. The gallery represents important emerging and mid-career artists and upholds a program that is committed to the dissemination of contemporary art practices that provide visitors with a rigorous perspective. Since its opening, Bradley Ertaskiran has focused on forward-looking contemporary art practices.



Preston Pavlis (detail)



Elizabeth Angrnaquaq Qiayuq

### **Feheley Fine Arts - Toronto**

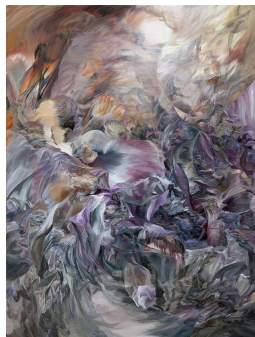
Feheley Fine Arts is synonymous with excellence in the field of Inuit art. With over 60 years of experience, the gallery is now situated in the historic St. Lawrence Market area of downtown Toronto. It is one of the last remaining commercial galleries in the world devoted exclusively to traditional and contemporary art from the Canadian Arctic. Its collections range from exquisite small sculptures dating from the mid-twentieth century to paintings and drawings by today's most sought after contemporary artists.

### **Franz Kaka - Toronto**

Franz Kaka opened in 2016 as a project-based gallery, presenting exhibitions by emerging and mid-career artists that privileged experimentation and risk-taking. Beginning in 2019, Franz Kaka began formally representing a number of the artists who had previously presented work with the gallery including Lotus L. Kang, Azadeh Elmizadeh, Anne Low, Elif Saydam, Nabil Azab, Katie Lyle, Paul Kajander and HaeAhn Woo Kwon. In addition to its gallery exhibition program, Franz Kaka regularly presents off-site projects through gallery collaborations and art fairs including recent participations in Frieze London, Liste Art Fair Basel, NADA New York, NADA Miami, and the Armory Show.



Karice Mitchell



Melanie Authier

### **Olga Korper Gallery - Toronto**

The Olga Korper Gallery is a commercial art space in Toronto committed to the marketing and sale of mid-career and established Canadian artists and is passionate about the discovery and promotion of conceptual Canadian artists working at the peak of creative production in this country. The gallery represents a roster of more than 40 artists and artist estates, participates in international art fairs to raise awareness of the Canadian art market abroad, and places works in private, public, and institutional collections worldwide.

### **Pangée - Montreal**

Pangée is a contemporary art gallery with a playful and critical curatorial approach that promotes dialogue between various practices. Established in 2016, as a project space under the direction of co-founder and head curator Julie Côté, Pangée now represents eight Canadian artists. Pangée embraces a vast range of media and brings together artists from various geographies, cultures, and identities, highlighting diverse approaches to art and materiality that are woven together with personal narratives while emphasizing women, non-binary, and queer perspectives. Pangée operates its gallery space and artist residency out of a historic building that overlooks Mont-Royal Park.



Grace Kalyta



Alexa Kumiko Hatanaka

### Patel Brown - Toronto | Montreal

Patel Brown highlights alternative perspectives and encourages experimentation and innovation in both its programming and operations. Identifying gaps in representation and opportunities guided by collaboration and community, the gallery's program examines traditions in culture and identity, and how they are increasingly challenged by the globalized world.

### Stephen Bulger Gallery - Toronto

Since 1995, Stephen Bulger Gallery has become synonymous with great photographs of all types, making it Canada's destination for enjoying original photographs. In addition to an active exhibition schedule, the gallery helps first time buyers, institutions, and collectors of all levels acquire works from several estates, as well as leading contemporary photographers and artists. The gallery maintains an active inventory of over 30,000 photographs comprised of historical Canadian works, as well as international Modern and Contemporary works that are either documentary in nature or that celebrate the medium.



Deanna Pizzitelli

### Consulate General of Canada to the United States in Los Angeles

<https://www.international.gc.ca>

Twitter: @CanCGLA Facebook: @CanadianLosAngeles

Instagram: @cancgla and @CanadianCreativeAccelerator

### VISITOR INFORMATION:

The exhibition is located at Praz Delavallade at 6150 Wilshire Blvd. The gallery is open Tuesday through Saturday from 11am-5pm.

### CONTACT:

For further information please contact Margot Ross at 323.217.2237 or [info@curatedbymargot.com](mailto:info@curatedbymargot.com).